



COTTAGE GROVE



****AVAILABLE AUGUST 2026****

****STUDENTS OF PROFESSIONALS****

Nexa Properties are delighted to be offering this immaculate two bedroom fully furnished apartment situated on St. Andrews Road, Southsea.

This property comprises of a spacious bright open plan living area with high ceilings and complete with a flat screen TV, contemporary occasional tables, dining table and chairs, two large leather reclining sofas and a superb kitchen space.

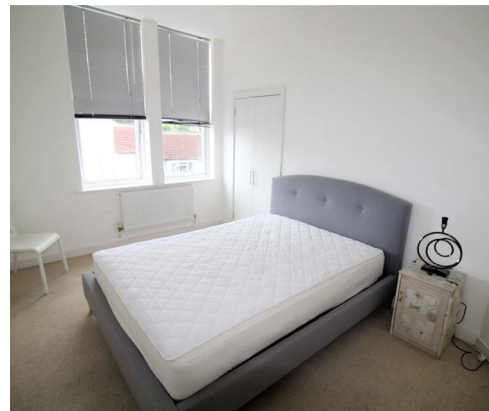
The quality kitchen comprises: Integrated appliances including, fridge/freezer, hob, oven, microwave, extractor, washing machine, tumble dryer, crockery, cooking utensils and cutlery. The Master Bedroom benefits from an en-suite shower room with contemporary fittings, fitted wardrobes, and a luxury king size bed.

The second bedroom also has a luxury king size bed, fitted wardrobe and wall mounted flat screen TV. A modern Bathroom with bath and over-head shower, toilet and wash hand basin.

The apartment is located in the heart of Southsea, within easy walking distance of some of popular shops, bars, cafes.

Video available on request.

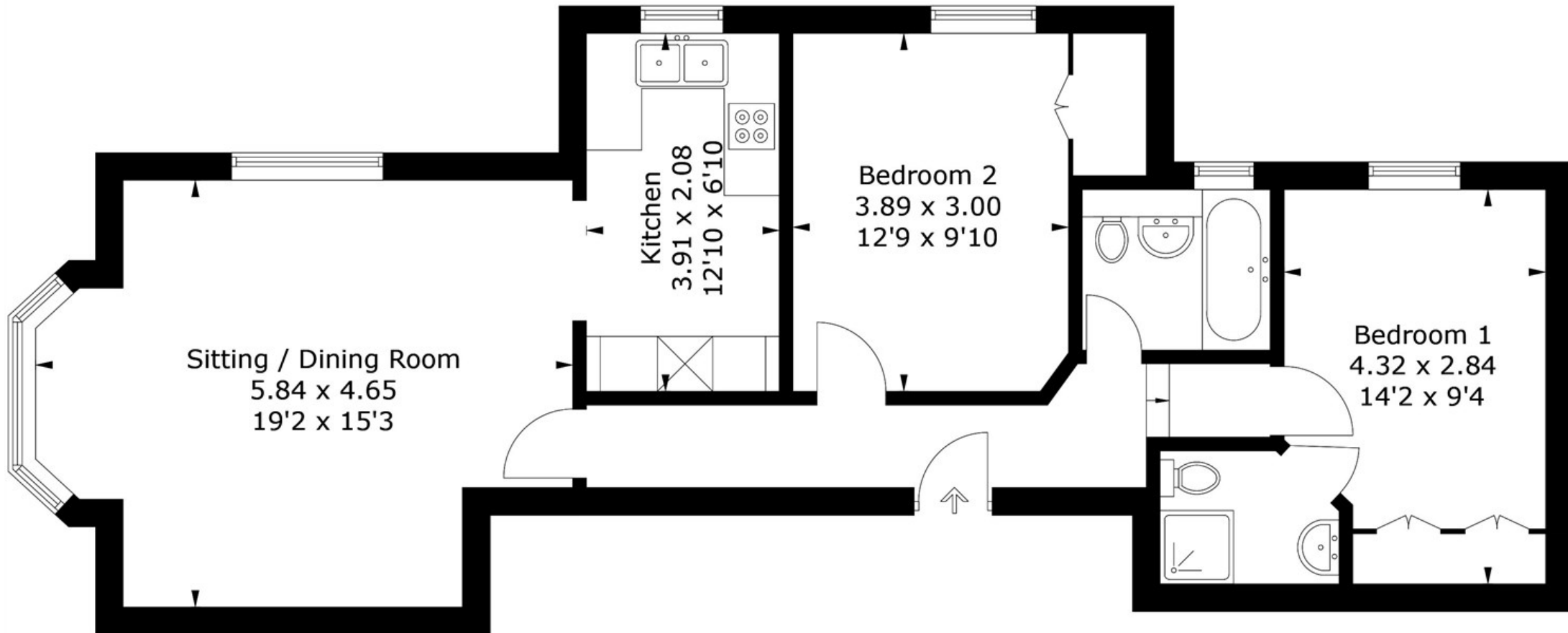
Contact NEXA to arrange a viewing.



- AVAILABLE AUGUST
- FIRST FLOOR FLAT
 - FURNISHED
 - WOULD SUIT PROFESSIONALS OR STUDENTS
- DOUBLE BEDROOMS
- EN-SUITE SHOWER ROOM
 - WHITE GOODS INCLUDED
- CLOSE TO SHOPS, BARS & UNIVERSITY
- VIDEO AVAILABLE
- EXCLUDING BILLS

21 St. Andrews Road, PO5 1EP

Approximate Gross Internal Area = 72.6 sq m / 781 sq ft



PRODUCED FOR NEXA PROPERTIES

Whilst every attempt has been made to ensure the accuracy of the floorplan, measurements of doors, windows and rooms are approximate. These plans are for representation purposes only as defined by RICS Code of Measuring Practice and used as such by any prospective purchaser. (ID791107)